

Hardware Variations / Accessories

Beside our standard products we may offer you a custom product variant matching your specific application. Most of our products are compatible with the following variations, for details about a specific product and pricing please contact us at sales@lobaro.de

Housing Options

Compact Lobaro Box Housing



- [Lobaro-Compact-Housing.pdf](#)
- Size: 114,30mm (w) x 59,30mm (l) x 26,80mm (h)
- Waterproof: IP65

Spelsberg TG PC 1208-6-o



- [Housing Options](#)
 - [Compact Lobaro Box Housing](#)
 - [Spelsberg TG PC 1208-6-o](#)
 - [Accessories](#)
 - [DIN-Rail Housing](#)
- [Power Supply Options](#)
 - [AA-Batteries \(3Ah\)](#)
 - [ER34615 3.6V Battery \(D-Cell, 19Ah\)](#)
 - [ER34615M 3.6V Battery \(D-Cell, 19Ah\)](#)
 - [230V External Supply \(5VDC\)](#)
- [Antennas](#)

- [Product Specifications \(external link\)](#)
- Size: 122mm (w) x 82mm (l) x 55mm (h)
- Waterproof: IP67

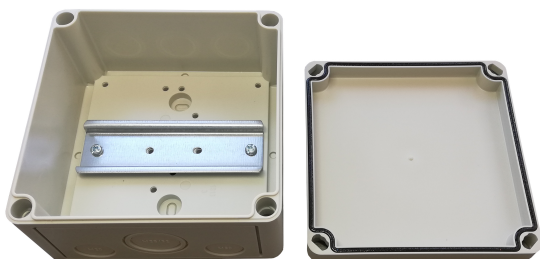
Accessories



DIN-Rail Housing

All DIN-Rail housings that fit our hardware are possible. The DIN-Rail mount can also be used without any housing.

We offer to deliver our hardware in the following housings:



130x130 (RK 4/12-L)

- [Product Specifications \(external link\)](#)
- Size: 130mm (w) x 130mm (l) x 75mm (h)
- Order number: 3000005

110x110 (RK 4/07-L)

- [Product Specifications \(external link\)](#)
- Size: 110mm (w) x 110mm (l) x 90mm (h)
- Order number: 3000092

Power Supply Options

AA-Batteries (3Ah)



Only for LoRaWAN products

Only our LoRaWAN hardware supports two AA-Batteries inside the Lobaró Box Housing.

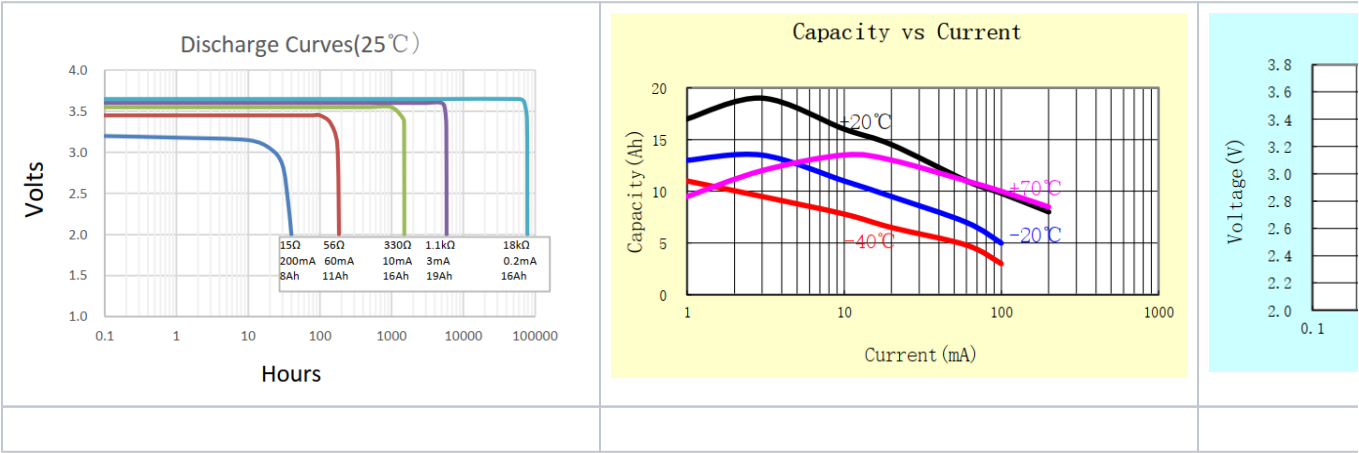
We recommend to use [Energizer Ultimate Lithium](#) for our products.

- Size: AA-Cell
- Voltage: 1.5V
- Capacity: up to 3Ah
- Operating temperature: -40°C...+60°C

ER34615 3.6V Battery (D-Cell, 19Ah)



- Size: D-Cell (34mm x 61.5mm)
- Connector: JST XH series
- Voltage: 3.6V
- Continuous Discharge Current: 200mA (max.)
- Capacity: up to 19Ah
- Operating temperature: -55°C...+60°C
- Li-SOCl2 (not rechargeable)



A reasonable alarm value for "Low Voltage" is around 3.2V - some devices might work on lower voltages.

ER34615M 3.6V Battery (D-Cell, 19Ah)

Similar to ER34615 but supports higher peak currents and is used for NB-IoT devices.

230V External Supply (5VDC)



Can be used standalone on an existing DIN-Rail or inside the DIN-Rail Housing ([see above](#))

Antennas

By default all our products are shipped with an internal pcb-antenna. An external SMA antenna connector can be mounted on request to the housing.

External antennas can be connected with a standard SMA RF-connector:

